

More Than a Bridge!

Each piece of this project impacts the others. As the ideas for improvements generated through the public involvement process come together, it will create a special place and common link for Kansas City.

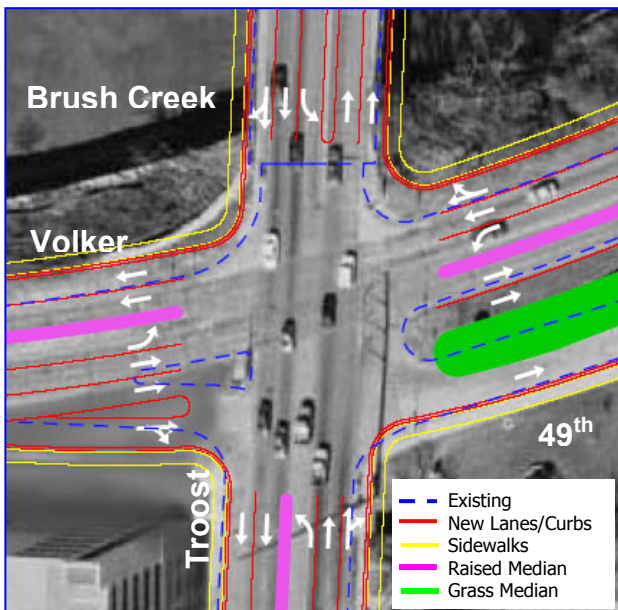
From Ideas to Design

Over the past several years, neighbors, stakeholders and community leaders have been working as part of the project team to develop and refine concepts for improvements in the area. Concepts for each component of the project were screened on three key criteria: **community input, project costs** and **functionality**. Community input came through a variety of public meetings and forums. Cost considerations included an evaluation of projected construction costs as well as maintenance and operations costs. Functionality screening criteria included safety, appropriate vehicular links and pedestrian access. With the screening process complete, the team is now moving from options and concepts into design and detailed engineering.

Brush Creek Channel Connections

The Brush Creek Channel Connection will improve the channel in the area near Troost. Improvements will include landscaping and pedestrian access along the creek.

If additional funding – either public or private – can be identified, improvements could include a pedestrian bridge over Brush Creek, additional landscaping as well as fountains.



Improvements to the Intersection of Troost, Volker and 49th Street

With the input of neighbors and the community, the team has evaluated options for the 49th Street - Volker - Troost intersection. A number of alternatives for improvements were considered in the search for the best possible solution. Priorities included enhancing safety, efficient movement of traffic and access to Troostwood. The planned alternative involves adding turn lanes on both Troost and Volker.

A variety of options were considered to improve safety at 49th and Troost. In seeking the best possible solution – based on public input and an evaluation of design and safety concerns – the planned improvements include a one-way east-bound 49th Street with continued access at the intersection.

Troost Bridge Over Brush Creek

The replacement of the Troost Bridge over Brush Creek comes with planned improvements to the Brush Creek Channel. After working with neighbors and stakeholders to establish goals and desirable characteristics for the bridge, a variety of replacement options were created and presented to the community. With that feedback, the team evaluated the options through an approach that included community input, a review of project goals, and a careful screening of options based on costs (both construction and maintenance) as well as how different bridge types might function, including safety.

At the conclusion of that process, a box or plate girder bridge type was selected as best meeting the area's needs and desires. The three remaining options include design enhancements – a critical issue to stakeholders and neighbors. Bridge Option A illustrates a design based on the established criteria; Options B and C are possible enhanced designs. All three options will include a public art component.



Option A



Option B



Option C

Public Art

Responding to the input of stakeholders, the team is working with the artists Derek Porter, el dorado and Custom Engineering to integrate a public art component into the bridge design. The engineers and artists have been working together to “root” the art (both formally and conceptually) into the bridge design and function. As the public art component develops, the team is working to incorporate the following qualities:

- Contribute to the symbolic significance of this site
- Complement the bridge design
- Add interest to the pedestrian and vehicular pathways in north/south and east/west directions
- Contribute to separation between vehicular and pedestrian activity.



Artists' concept, including Translucent Barrier (left) and Luminous Canopy (right)

Streetscape Concepts

Ideas are being developed to further enhance the area by creating a streetscape on Troost that would link the bridge and public art component with neighborhoods, businesses and institutions in the surrounding area.

Neighbors, stakeholders and the community will have more opportunities for input into streetscape elements as design progresses.

What's Next?

The project will move into the design phase later this year and construction could begin as early as 2006.

More Questions?

Call Karin Jacoby or Kerry Kanatzar at:
(816) 513-7975.